

# Specification

Std series-D560-12V-10mm



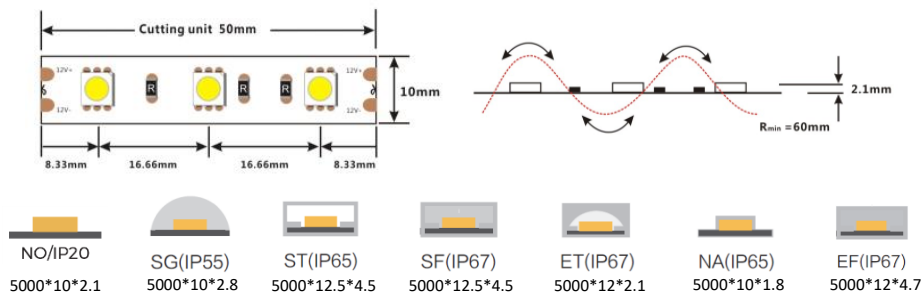
## General description

- ※5050 LED with broader luminous surface
- ※Self-encapsulated design offers six optional 2300-6000K white lights and four optional R/G/B/Y colorful lights
- ※High quality FPC, high thermal 3M adhesive
- ※Ta: -25~40° C; Tc: 75° C (max)



## Dimensions

- Max.length:** 5000mm
- Cutting unit:** 50mm/3leds
- LED pitch:** 16.66mm
- Min. bend diameter:** Φ60mm
- Mounting:** 3M tape
- IP:** IP20/55/65/67

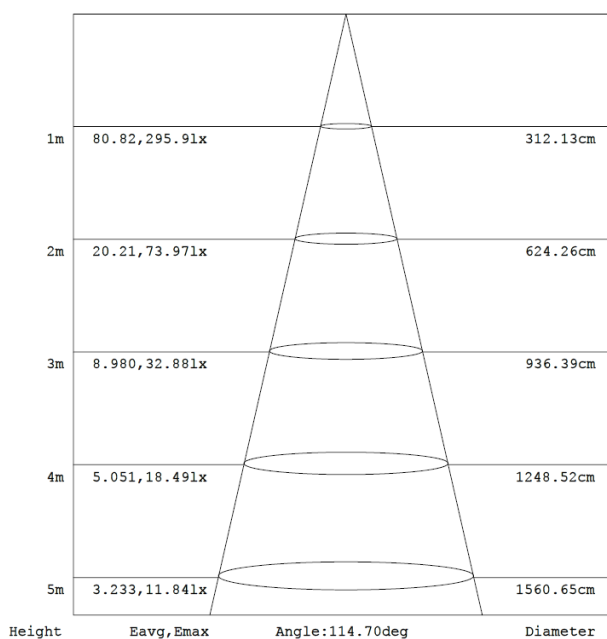
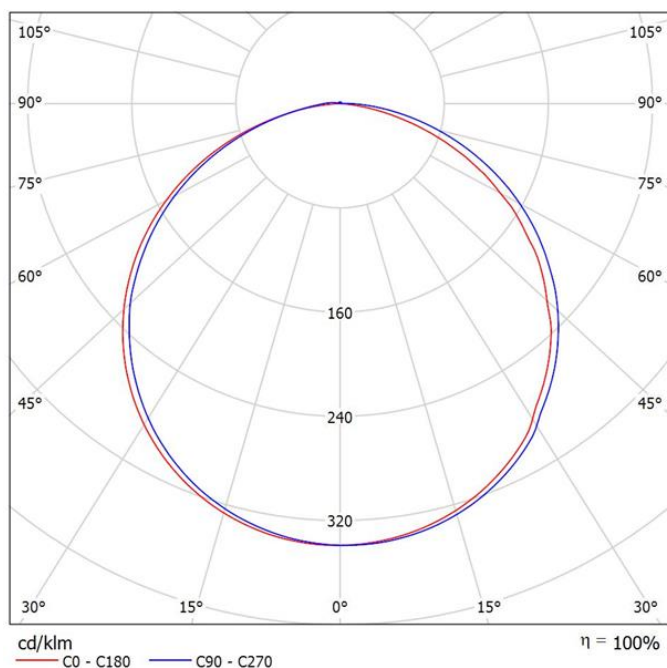


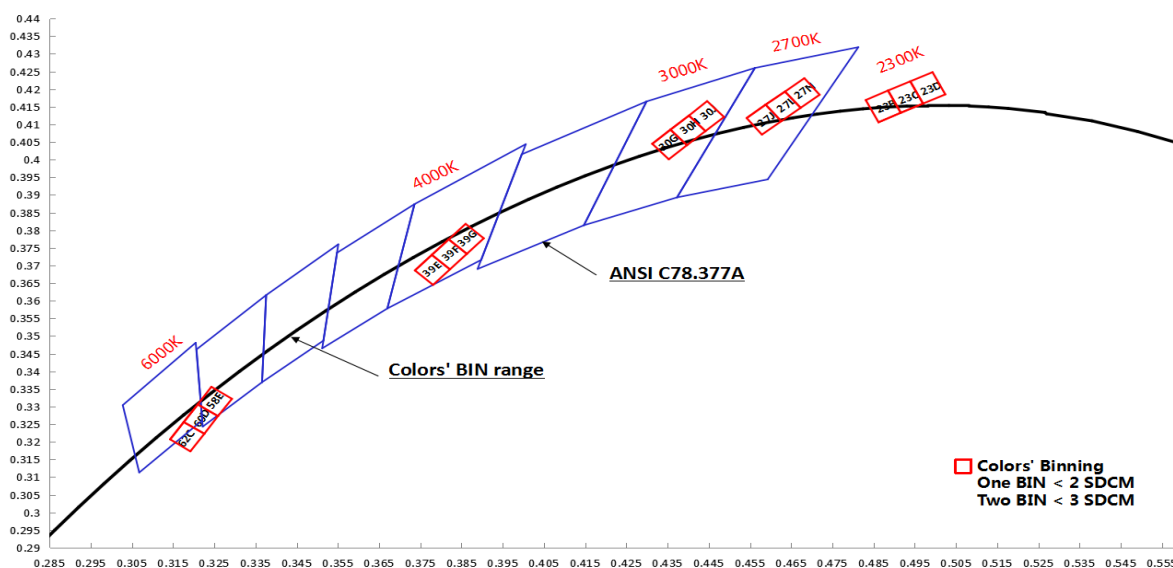
## Electronic & output data



- Input voltage:** 12VDC
- Rated current:** 1.04(1meter) /4.73A(5meter)
- Typical Power:** 12.5W(1meter) /56.76W(5meter)
- Power range:** 11.5~13.4W
- Max.power:** 14.4W (If=60mA)
- CRI:** 80/95
- On-off times:** 10000 (test times)

| Color                          | LW    | SW     | WW     | NW     | W      | R/G/B/Y |
|--------------------------------|-------|--------|--------|--------|--------|---------|
| <b>CCT</b>                     | 2300K | 2700K  | 3000K  | 4000K  | 6000K  | /       |
| <b>Lumen</b>                   | 976lm | 1044lm | 1101lm | 1135lm | 1101lm | /       |
| <b>Lm/W</b>                    | 78    | 84     | 88     | 91     | 88     | /       |
| <b>Energy efficiency class</b> | A     | A      | A+     | A+     | A+     | /       |

1.The tolerance of output data can be vary up to 10%  
 2.the output data tested according to IES LM-79-08  
 3.the output data is based on IP20/1meter  
 4.IP protection process leads changes to size, CCT and luminous flux



**BIN**

**Accessories Information**

| Type                      | Name                           | Picture   | Code  | Color       | protection technique | Remark           |
|---------------------------|--------------------------------|---|---|-------------|----------------------|------------------|
| wire cable with connector | red and black cable            |  | 94-01-00-0005 (head)<br>/94-01-00-0006 (tail) | red/black   | NO/ST/SF/NA/SG       | 16AWG<br>L=120mm |
|                           | Split-box                      |  | 94-01-00-0047                                 | -           | -                    | -                |
|                           | Quick wiring                   |  | 94-01-00-0048                                 | -           | -                    | -                |
| connector                 | Solder free terminal           |  | 94-03-00-0037                                 | transparent | NO                   | -                |
|                           | Solder free terminal           |  | 94-42-621020004                               | transparent | NO                   | -                |
|                           | Solder free terminal           |  | 94-03-00-0045                                 | transparent | SG                   | -                |
|                           | Solder free terminal           |  | 94-03-00-0049                                 | transparent | SG                   | -                |
| Fixed parts               | 10mm Fixed clasp               |  | 94-02-00-0003                                 | transparent | ST/SF/SG             | -                |
|                           | 10mm Tube clamps               |  | 94-02-00-0018                                 | transparent | NO                   | -                |
|                           | 10mm Tube clamps               |  | 94-02-00-0016                                 | transparent | SG                   | -                |
|                           | 10mm No silicone hole plug     |  | 94-02-00-0009                                 | transparent | ST/SF                | -                |
|                           | 10mm Silicone single hole plug |  | 94-02-00-0012                                 | transparent | ST/SF                | -                |
|                           | Stopper glue                   |  | 94-16-03010001                                | transparent | ST/SF                | -                |

## Order Code Formats

| 1:Category |   | 2:LED |      | 3:LED/m |        | 4:Voltage |     | 5:FPC Width |      | 6:IP Process |                  | 7:CRI |     | 8:CCT |       |
|------------|---|-------|------|---------|--------|-----------|-----|-------------|------|--------------|------------------|-------|-----|-------|-------|
| D          | - | 5     | 5050 | 60      | 60 LED | 12        | 12V | 10          | 10mm | NO           | NO               | 8     | >80 | 1W    | 2300K |
|            |   |       |      |         |        |           |     |             |      | SG           | SILICONE GLUE    | 9     | >95 | SW    | 2700K |
|            |   |       |      |         |        |           |     |             |      | ST           | SILICONE TUBE    |       |     | WW    | 3000K |
|            |   |       |      |         |        |           |     |             |      | SF           | SILICONE FILLED  |       |     | NW    | 4000K |
|            |   |       |      |         |        |           |     |             |      | ET           | Extrusion Tube   |       |     | W     | 6000K |
|            |   |       |      |         |        |           |     |             |      | EF           | Extrusion FILLED |       |     |       |       |
|            |   |       |      |         |        |           |     |             |      | NA           | NANO             |       |     |       |       |

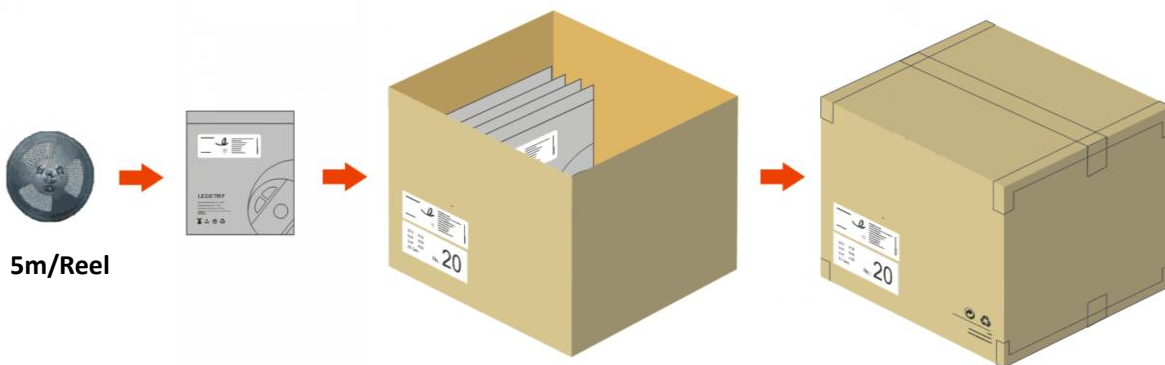
  

| 9:Silk Printing |            | 10: Entery cable |         | 11:Wire type |                     | 12:Wire length |         | 13:Tape type |           | 14:Label Type |            | 15: Strip Length |      |
|-----------------|------------|------------------|---------|--------------|---------------------|----------------|---------|--------------|-----------|---------------|------------|------------------|------|
| C               | COLORS     | S                | Single  | A            | red and black cable | 012            | 12cm    | W            | White 3M  | C             | COLORS     | 0050             | 0.5m |
| S               | customized | D                | doubel  | B            | SM-male wire        | 020            | 20cm    | Y            | Yellow 3M | S             | customized | 0100             | 1m   |
| N               | Neutral    | X                | Nothing | C            | SM-female wire      | 050            | 50cm    | R            | Red tape  |               |            | 0200             | 2m   |
|                 |            |                  |         | X            | Nothing             | 100            | 100cm   | X            | Nothing   |               |            | 0500             | 5m   |
|                 |            |                  |         |              |                     | 000            | Nothing |              |           |               |            | 5000             | 50m  |

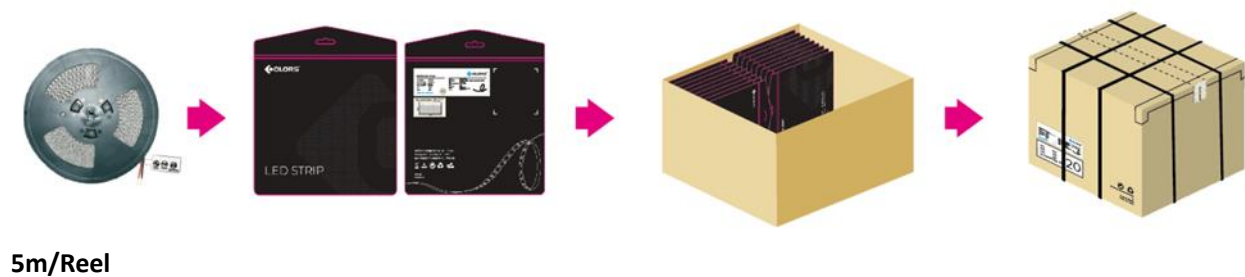
**D5601210NO-8NWCD A012WC0500**

## Packing

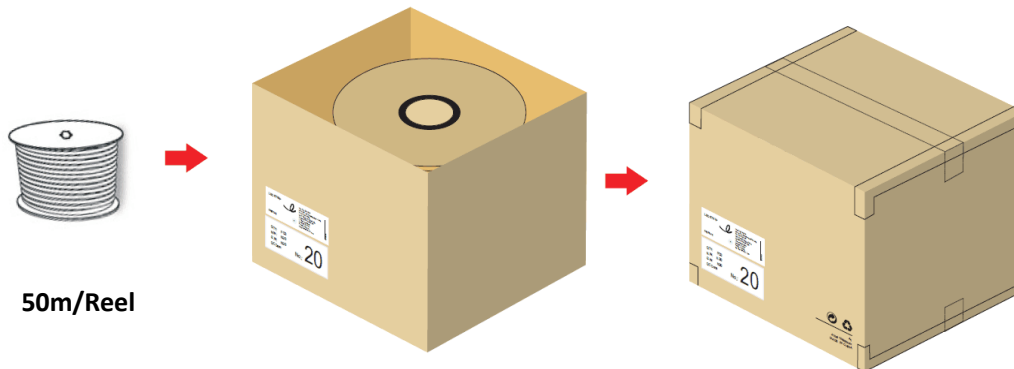
1. Non- brand of NO(IP20)/SG(IP55)/ST(IP65)/SF(IP67)/ET(IP67)/EF(IP67)/NA(IP65).



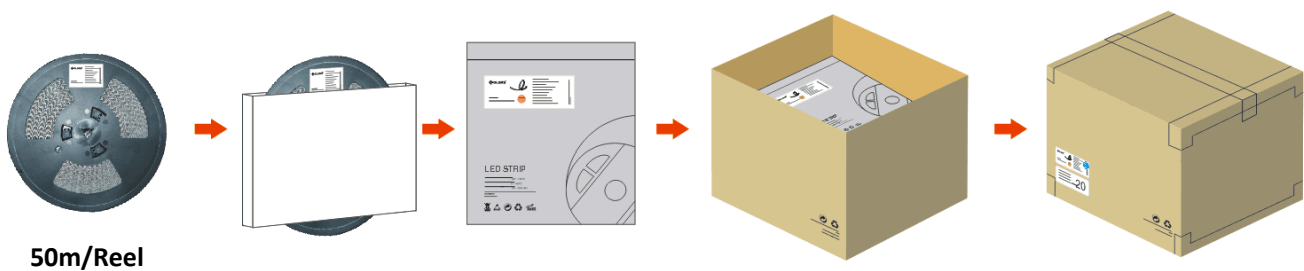
2. Brand of NO(IP20)/SG(IP55)/ST(IP65)/SF(IP67)/ET(IP67)/EF(IP67)/NA(IP65).



**3. Engineering packaging of ET(IP67).(free-soldering end caps with 30 cover per box could be ordered separately if needed)**



**4. Engineering packaging of NO(IP20)**



## Disclaimer

- ※Please drive the led strip with 12VDC isolated power, and the ripple of the constant voltage source should be less than 5%.
- ※ Please do not bend the strip into an arc with a diameter less than 60mm to ensure the longevity and reliability.
- ※Do not fold it in case any damage of LED beads.
- ※Do not pull the power wire hard to ensure the longevity. Any Crash may damage the LED light is prohibited.
- ※Please make sure the wire is connected to the anode and cathode correctly. The power output should be consistent with the voltage of the strip to avoid damage.
- ※LED lights should be stored in dry, sealed environment. Please only unpack it before usage. Ambient temperature:  $-20\text{ }^{\circ}\text{C} \sim +40\text{ }^{\circ}\text{C}$ .Storage temperature:  $-0\text{ }^{\circ}\text{C} \sim +60\text{ }^{\circ}\text{C}$ .Please use the strips without waterproof within indoor environment with humidity less than 70%.
- ※Please be careful during operation. Do not touch the AC power supply in case of electric shock.
- ※Please leave at least 20% power for the power supply during using to ensure there is enough power supply to drive the product.
- ※Do not use any acid or alkaline adhesives to fix the product (e.g.: glass cement).

